



Lampasas County Extension Office, P.O. Box 231, Lampasas, TX 76550

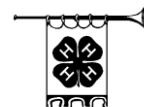
(512) 556-8271, x140

E-mail: lampasas-tx@tamu.edu

Home Page: <http://lampasas-tx.tamu.edu>



4-H News



NOVEMBER 2014

Learn More About 4-H

<http://texas4-h.tamu.edu/>

Use this link to learn

All about state 4-H programs find publications
(project guides, record keeping information, etc.)

<http://d74-h@tamu.edu>

Use this link to learn about District 7 4-H happenings
(district contests, etc.)

<http://texas4h-ctr.tamu.edu/>

4-H Club Meetings*

OAKALLA/KEMPNER 4-H

The next meeting is Monday Nov. 10 at 7p.m. in the
Taylor Creek Elementary School cafeteria.

For more information contact the club manager Lisa
Jorstad at 254-432-6088 or charity9900@yahoo.com.

SULPHUR CREEK CLUB

The Sulphur Creek 4-H Club will be meeting on Nov.
18 at 6:00p.m. in the Lampasas County Show Barn.
County extension agent Heath Lusty will speak on
sheep and goat projects. There will be a potluck
dinner so please bring a side dish or dessert. Everyone
is invited. For more information contact club
managers Becca Dishman becs@sbcbglobal.net 512-
556-3763 or Gennifer Brister
nursegenny1974@hotmail.com 325-628-3209.

LAMPASAS 4-H Food, Fun, & Fashion

The next meeting will be November 18 at 5:30pm in
the County Annex conference room.

For more information contact club manager Karen
DeZarn 512-556-8271 ext. 140

Horse Club

November 17 - Monthly Meeting at 6:00 p.m. in the
Farm Bureau conference room. For more information
contact Shelley Kozma at 817-845-5041 or Kim
Pearce at 512-556-3183.

Archery Club

Due to hunting season the Archery club will not begin
meetings and shoots until January, so stay tuned for
future information. For more information contact
Jaimie Smart at

Swine Club

Next meeting will be Tuesday November 4 at 6:00 in
the show barn. Don't forget, supper will be provided!

Thanks, Bobby Gene. For more information contact
club managers Bobby Gene Carroll 512-525-1540 or Chad
Hopson 512-734-2122.

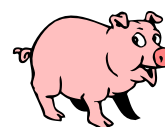
Welcome to the 2014-15 Texas 4-H Year!

It is that time of year for your 4-H enrollment to go
inactive and to start re-enrolling for the 2014-15
Texas 4-H year. The 2013-14 year has come to an end
and special thanks goes out to all the 4-H members,
volunteers, parents, county Extension Agents, and
county support staff that helped make it a great year.
Go to <https://texas.4honline.com> to enroll today.
See attached flyer for enrollment instructions.

*When accessing the registration link, use a browser
other than MS-EXPLORER, such as FireFox.*

November County Council Meeting

The next open County Council meeting will be held at
6:00pm on Monday, November 3rd at the County
Annex Bldg.



4-H Half of a Pig Raffle

4-H Half a Pig Raffle tickets are here and available
for pick-up in the Extension office. Come by and
pick-up some to sell. \$1 per ticket or 6 for \$5.

Lampasas County Livestock Association

Validation Dates

Wednesday Nov. 12th: Heifers 4:00-6:00pm

Tuesday, Nov. 25th: Swine & Rabbit 4:00-6:00pm

*All validations are held at the County Show barn.

2015 County Stock Show Schedule

January 8th, 9th, 10th, 2015

Wednesday – Ag Mechanics

Thursday – Chickens

Friday – Swine, Sheep, Goats, Rabbits, Food Fair

Saturday – Heifers & Steers, Buyers Dinner, Premium
Sale.

Major Stock Show Entries

Entries for major stock shows (Kerrville, Ft Worth, San Angelo, San Antonio, Austin, Houston) will be done by appointment in the Extension November 12-14. You need to call Heath and schedule an appointment! Be sure that you have taken and passed the Quality Counts test and have a verification number. Without a Quality Counts verification number, you cannot enter any major show



2014 Rabbit Project and Workshops

If you are interested in participating in the Rabbit Project for the upcoming year, contact Rod Freeman at 254-535-9583.



Carol of Lights

Karen is requesting help for the 4-H fundraiser. 4-H will sell glow lights during the Christmas parade, which is part of the Carol of Lights festival. Middle and high school age 4-Hers interested in helping contact the office. We will meet at 4pm on Saturday December 6th at the extension office. Call the office or Facebook to let us know if you will participate.



Scholarship Training



6:30-8:30 pm

December 2 – Tom Green County 4-H Building

December 4 – Llano County Extension Office

December 11 – Taylor County Extension Office

What is new for 2015:

- **A 4-H member can apply for a Texas 4-H, Texas FFA, and Texas FCCLA scholarships**
- **The scoring matrix for 4-H scholarships has changed for 2015**
- **Scholarships will be presented over three nights at the 2015 Texas 4-H Roundup. Applicants, if receiving a scholarship(s) will be told what group of scholarship they will be receiving and what night(s) to be present. With the pre-notification of scholarship groups 4-H members will be able to be recognized at end-of-year school assemblies and ceremonies as a scholarship honoree.**

Due dates and deadlines for 2015 Scholarship process are as follows:

October, 2014	Release of 2015 Application
November – January	Scholarship Trainings (Some online)
November – December	Applicant complete FAFSA and receive report
Set by County Office	Application due to County Office
February 6, 2015	Applications due to District Office
February 20, 2015	Applications due to State 4-H Office
April 10, 2015	Interview selection notification
May 1-3, 2015	Interviews (Austin)
June 9,10, &/or 11, 2015	Awards Assemblies/Banquets (College Station)

Are You A High School Junior or Senior? **Are You Planning on Attending College?**

If so, join the Texas A&M University Collegiate 4-H Club for this 4-H Scholarship Workshop.

Saturday, November 8, 2014 9:30 am to 2 pm
Rudder Tower, Memorial Student Center Complex
Texas A&M University, College Station

The Texas A&M Collegiate 4-H Club will be hosting a scholarship training for Texas 4-H members and parents who are wanting to learn about completing a 2015 Texas 4-H Opportunity Scholarship Application, or how to prepare and plan for applying in future years.

The workshop will include:

- Overview of the scholarship processing including the scoring and selection.
- Criteria and eligibility
- Detailed review of each section of application
- Hints and tips for submitting a quality application
- General information about college financial aid

Registration is **\$20.00 per person** and includes all workshop materials, breaks and lunch.
Registration is limited to 150!

Registration deadline is *Monday, November 4, 2014*

To register, click [HERE](#) to download the fillable pdf registration form. Complete the form and mail with your payment to: 4-H Scholarship Training, c/o Lauren Campion, 3203 Sandpiper Circle, Bryan, TX 77802

Location for the Training Room 601, Rudder Tower, Memorial Student Center Complex Texas A&M University, College Station, Texas

Thank you for supporting the TAMU Collegiate 4-H Club.

New Team Project – **Consumer Decision Making**

Good consumer skills can help you get more for your money. Consumer Decision Making gives youth the opportunity to make wise decisions when shopping. Consumer Decision Making is a judging contest designed to teach kids to observe, compare and make consumer based decisions based on facts. 4-Hers use their consumer knowledge to rank similarly based products to fit a given scenario. Kids learn to organize their thoughts and to defend their decisions in oral reasons. Consumer Decision Making is a great way to learn how to shop better! The Consumer project's first meeting will be held **Thursday December 5th**, at 5pm, at the Extension Office Meeting Room! Please RSVP so Karen knows you are interested. Make sure and come and learn all about the project and what it has to offer. We will be discussing the new classes for this year and preparing for the project! There are 3-5 members per team. Weekly practices will be scheduled based on team members' availability.

Friday January 30 is County Deadline for Consumer Decision Making Teams.

Friday February 27 is the District Consumer Contest– at the San Angelo Stock Show. There is a possible large cash award for the senior division.

Guidelines can be found at:

http://texas4-h.tamu.edu/project_consumer/cdm

2015 Photography Rules & Guidelines

(Adult Volunteer needed for Project Leader)

Watch for emails and Facebook postings for November workshop information. The 2015 Texas 4-H Photography Rules and Guidelines are now available online. The categories have remained the same for the 2015 contest; however, some of the descriptions have been updated to address questions pertaining to what is allowable in each of the categories. The theme for 2015 is: "Inspiration". This optional category will focus on photographs that move and inspire you. Photos can include leaders, mentors, family, friends, things in your community, School, church, or across the country and world.

The 2015 Rules and Guidelines are posted on the Texas 4-H Photography website at:

http://texas4-h.tamu.edu/project_photography

The County contest for Jr. & Intermediate requires 8 10 photos to be mounted on a foam board backing which the office can supply.

QUALITY COUNTS

Quality Counts Verification will be a part of the process for entry in all 2014-2015 major & county shows. This year at the Heart O' Texas Livestock Show, we will be following along with other Major Livestock Shows across Texas and supporting the Quality Counts Program. Along with the State Fair of Texas, this fall we will be requiring the Quality Counts Verification Number to be included on the entry forms in order for the exhibitors to show at any of our Junior, Jackpot and Scramble Shows.

This means youth exhibitors will need to demonstrate their knowledge of the Six Pillars of Character and the Eight Core Concepts presented in the Quality Counts Curriculum. To do this, they will need to pass an online test on the website (<http://qualitycounts.tamu.edu/>) and acquire a Quality Counts Verification number. A Verification number is obtained by answering 80% of the questions correctly on an online test. You will need it when entering majors. If you lose it then you will have to take the test again and get a new number. You will not be allowed to enter without it.

Will You Be a 4-H Member in Good Standing?

- Select one or more projects for in-depth study
- Record what you learn (record book)
- Attends meetings regularly and is an active participant
- Completes a community service project (or becomes involved in a group community service project)
- Participates in some form of public presentation
- If you are elected as a club officer completes duties expected of that office

Parents please support your children to complete these expectations and volunteer to help at club and/or project meetings with such things as supplying drinks, snacks and/or activities. Volunteers are

needed for project management and new club management. Contact Heath or Karen if interested.

Lampasas County 4-H is readily available on the internet

Below are links to many sites you may find useful.

<http://lampasas.agrilife.org/> Lampasas County Extension website.

<http://texas4-h.tamu.edu/> Texas 4-H website.

<https://texas.4honline.com/> State 4-H registration page, 4-H Connect.

<http://4-h.org/> National 4-H site including the 4-H mall.

<http://www.national4-hheadquarters.gov/> National 4-H site.

Clothing & Textiles Packet (will be updated for 2012)

<http://fcs.tamu.edu/clothing/4h/packet/index.php>

Share the Fun Information

http://texas4-h.tamu.edu/library/files/youth_roundup_resources_share.pdf

District 7 4-H Events

<http://d74-h.tamu.edu/>

4-H Record Books

<http://www.4hreports.com>

4-H Shooting Sports

<http://texas4-h.tamu.edu/shootingsports/index>

4-H Round-Up

<http://texas4-h.tamu.edu/youth/roundup/index.php>

Leaders 4 Life

http://texas4-h.tamu.edu/project_leadership/leaders

Better Living for Texans

<https://www.facebook.com/BetterLivingForTexansLampasasCounty>



FACEBOOK Check out Lampasas 4-H on Facebook. Become a friend!

<http://www.facebook.com/groups/199928750048104>

Sincerely,

Heath Lusty
CEA – AG/NR

Karen DeZarn
CEA – FCS



SUNDAY	MONDAY	TUESDAY	WEDNESDAY	THURSDAY	FRIDAY	SATURDAY
November						
2	3	4	5	6	7	8
	* 4-h County Council Meeting @ 6:00pm *Registration deadline for 4-H Scholarship Workshop. @ College Station.	*Swine Club meeting at 6:00 pm in the Lampasas County Show Barn.				* 4-H Scholarship Workshop @ College Station 9:30am to 2pm.
9	10	11	12	13	14	15
	*Oakalla/Kempner club meeting 7pm Taylor Creek Elementary		* Major Stock Show Entries appointments. *Heifer validation 4-6pm @ Show Barn.	* Major Stock Show Entries appointments.	* Major Stock Show Entries appointments.	
16	17	18	19	20	21	22
	*Lampasas 4-H Horse club meeting 6pm @ the Farm Bureau Bldg.	*Sulphur Creek club meeting 6:00 pm at the Lampasas County Show Barn. *Lampasas Food, Fun, & Fashion Club meeting 5:30 in the County				
23	24	25	26	27	28	29
		*Swine & Rabbit validations 4-6pm @ Show Barn.		Thanksgiving Day	Holiday	
30						
512-556-8271 EXT 140		4-H Events & Activities				

Welcome to Texas 4-H!

Welcome to the largest youth organization in Texas! Texas has more than 550,000 youth who are involved in 4-H experiences each year and we are pleased that you have decided to join 4-H for the 2014-2015 year! If you are new to 4-H, here is some information about our enrollment process and how we need your partnership in getting your membership entered and active!

Each year on August 15th all membership in Texas 4-H goes to inactive and all youth members and adult volunteers must re-enroll. Youth members are required to pay a \$20.00 participation fee if enrolled by October 31st, and a \$25.00 fee from November 1st to the completion of the 4-H year. Adults pay a \$5.00 volunteer applicant fee starting in the 2014-2015 4-H year. Adults and youth will need to enroll on 4HConnect and be active to be considered an official member of Texas 4-H. An active enrollment is required in order to register and participate in all 4-H activities and events.

Enrollment payment methods, procedures and additional fees may vary in each county, so check with your local county Texas A&M AgriLife Extension Service office for more information. (counties.agrilife.org) When you are enrolling in 4-H and you arrive at the invoice/payment screen, you will be able to add your credit card information into the system or select the club/county (no personal checks allowed) check payment option. If the club/county check option is visible, please make sure you are allowed to use it. Some counties require all enrollment to be paid by credit card. If you are allowed to use the club/county check option you are responsible for writing a check to your club/county 4-H Program which in return will send a club/county check to the Texas 4-H Youth Development Foundation. Once a payment method has been selected and enrollment submitted the payment type cannot be changed.



4HCONNECT is...

- The official Texas 4-H Youth Development Program database for enrolled 4-H members and volunteers.
- A secured database that is in compliance with the PCI Security Standards Council. The Texas 4-H Youth Development Program and the 4HOnline company work closely to monitor and ensure the highest level of protection for information stored on the system. Texas 4-H, nor 4HOnline, does not share or sell any personal information to third party vendors without your knowledge or permission.
- Based on "zero-based enrollment." This means that each year at the start of the enrollment cycle membership in Texas 4-H goes to zero and everyone must re-enroll. This process is based on federal accounting policies.
- A partnership between the 4-H family and the county Extension Office. We encourage all 4-H families to become familiar with 4-H CONNECT in order to prevent "meltdowns" at crucial times of enrollment, animal validation or registration! Please work with the county Extension Office for any questions or problems you maybe experiencing with the system.
- NOT a database for counties/clubs/families to enter family members (i.e. siblings, grandparents, etc) that are not directly involved as a 4-H member or volunteer.



- Most questions can be answered by calling your county extension office. (counties.agrilife.org/)
- You are not a member or a volunteer of Texas 4-H until you have an ACTIVE status listed on your profile in 4-H CONNECT.
- 4-H members CANNOT register for an event/contest until the member profile is ACTIVE. If the county requires paper enrollment forms, that office has to enter enrollment information into the 4-H CONNECT system as well.
- Adult Volunteers are required to be screened through the Texas 4-H Youth Protection Standards program every three years.
- The Texas 4-H Foundation does not accept any personal checks for participation fees, animal validations or event registrations.
- A youth that is 8 years old and going into the 3rd grade must wait until September 1st to enroll for proper fees to be accessed in the system.

To help ensure your first time enrollment, or your re-enrollment, is as easy as possible, this document has been developed to lead you through the process. Please read and contact your county Extension Office if you have any questions prior to you beginning the enrollment process. (counties.agrilife.org/)



TEXAS A&M
AGRI LIFE
EXTENSION



Educational programs of the Texas A&M AgriLife Extension Service are open to all people without regard to race, color, sex, disability, religion, age, or national origin. The Texas A&M University System, U.S. Department of Agriculture, and the County Commissioners Courts of Texas Cooperating.



INSTRUCTIONS

1. Access the 4-H CONNECT on-line system at: <https://texas.4honline.com/>
2. **New Members:** Select [I need to set up a profile].
Returning Members: Select [I have a profile] or [I forgot my password].
Contact County Extension Office for resetting assistance.
3. **New Members:** Select Adult or Youth from the drop down menu and click [Add Member].
Returning Members: Click [Edit] to the right of the inactive member's profile.
4. Once all profile information is current and correct under the Personal Information, Additional Information, Health Form, and Participation areas of enrollment continue to the Invoice page.
5. Review your invoice to ensure that the participation fee has been charged and it is correct. If you have been awarded an award certificate or a scholarship to cover your participation fee, enter the award code in the award code box. Once information has been reviewed, click continue to the Payment screen.
6. **New Members:** If you are new to 4-H, you can add your credit card payment information to 4-H CONNECT and it will be securely stored. Click the orange [Add New Credit Card] link if paying with credit card or select the county club check option.
Returning Members: If the credit card on file has been updated you will need to remove it and add the credit card again using the new information.
7. Select the appropriate method of payment by clicking on the correct button, then click [Select Payment Method.]
8. On the "Confirm page" each person will be required to click the [Pay By Computer Terms and Conditions]. Click [Submit Enrollment]
9. Once an enrollment (new member) or re-enrollment (returning member) has been submitted, it is sent to the county office for review and approval. Once approved and paid for, an email confirmation will be sent to the family email address. Payment by 4-H Check can take up to 2 weeks to process. An active membership status **WILL NOT** be granted until participation fees have been received and marked as paid.



4HConnect Instruction pages can be found online at <http://texas4-h.tamu.edu/connect>

NEW MEMBERS

- Set up **only one (1) FAMILY profile household** on 4-H CONNECT.
- Write down and place in a secure location the email address and password for the account. Contact the local County Extension Office for assistance in resetting the account.
- Add individual youth and adult profiles (members) in your family profile. Adult/Youth and family profiles must be entered for an enrollment to be reviewed and accepted.



RETURNING MEMBERS

- **DO NOT** establish another family or member profile on 4-H CONNECT if you already have one in the system.
 - Contact the local County Extension Office for assistance with the email or password if forgotten.
 - When you access your profile to re-enroll **REVIEW YOUR PROFILE VERY CAREFULLY**. Incorrect information can create problems for you, your family, and the Extension Office when trying to communicate, accessing appropriate fees, acquiring school absences, etc.

Teen Retreat



January 9-11, 2015 Texas 4-H Conference Center

- **Who?** Senior age 4-H members, grades 8-11 and adult sponsors
- **Why?** Develop leadership skills through workshops and hands-on learning experiences
- **How?** Register on **4-H Center website between Nov 1 and Dec 31**
- **Cost?** Registration includes 2 nights lodging, 4 meals, snacks and all program supplies.
Youth \$115, Adults \$80
- \$90 Chaperone fee if County does not provide chaperone

- Teen Retreat at the Texas 4-H Conference Center provides a state level leadership experience for 4-H youth ages 13-19.
- Sessions include: Vet Science, Dog Project, STEM, Food Challenge, Fuel up to Play 360 & Leadership
- The program is designed to allow teens to explore new or revised projects and curricula resources and return to implement them in their counties.
- Join us for a weekend of Fun, Fun, Fun!
- 4-H Specialists, Volunteers and Summer Staff and other experts will lead program sessions.



LEARNING THROUGH SERVING OTHERS

Texas Teen Retreat

Friday, January 9, 2015

7:00-9:00 p.m.	Registration (eat dinner before you arrive! Snacks will be provided) Dance/games/cards/dominos will be available as groups arrive
9:00	Recreation/ Games – Auditorium
10:00	Orientation/Adult Chaperone Meeting—Auditorium
10:00	Dance -- Auditorium
11:30 p.m.	Vespers
12:00 midnight	Lights Out

Saturday, January 10, 2015

7:30 a.m.	Flag Ceremony followed by Breakfast
8:45	Opening Assembly -- Auditorium
9:00	Concurrent Sessions #1
10:15	Concurrent Sessions #2
11:30	Team Activities
12:00	Lunch
1:30	Concurrent Sessions #3
2:30	Concurrent Sessions #4
3:30	Concurrent Sessions #5
4:30	Team Activities—Auditorium
5:15	Free Time— Rec Room, T-Shirt Shoppe Open
5:45	Flag Ceremony followed by Dinner
7:15	Team Challenge
8:30-11:30	Dance/Recreation -- Auditorium
11:30	Vespers
12:00	Lights Out

Sunday, January 11, 2015

7:30 a.m.	Flag Ceremony followed by Polar Bear Swim Breakfast; Finish Cleaning Dorms
9:00	Evaluation and wrap up
10:00 a.m.	Departure Have a safe trip home!

TEXAS A&M AGRI LIFE EXTENSION



Re-Fashion

January 16-18, 2015

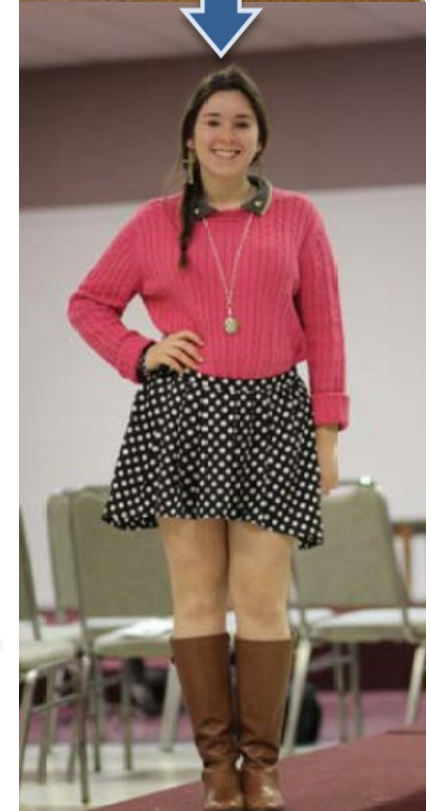
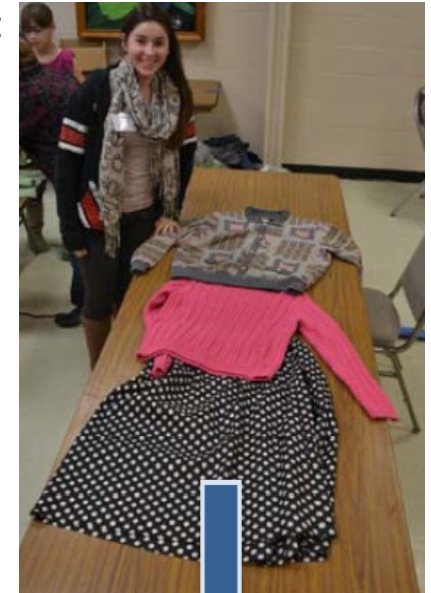
Texas 4-H Conference Center



Retreat

The Re-Fashion Retreat features educational sessions conducted by the Texas 4-H Clothing & Textiles youth advisory board members, fashion industry leaders and extension staff. They will be conducting **hands-on educational workshops.**

This new program will focus on increasing your knowledge and skills for the "Trashion Show" and complete refashioning project. Don't miss out on a weekend full of fun and exciting activities.



Join us for the Fun!



WHO: 4-H members ages 8 & up (and Adult Chaperones)

WHAT: State Level Clothing and Textile Skill Development Workshop

WHERE: Texas 4-H Conference Center, Brownwood

WHEN: Friday, January 16th arrive 6:30-7:30 p.m. through Sunday, January 18th .

COST: **\$115** for youth, **\$80** for Adult Chaperones (includes two nights lodging, four meals, two evening snacks and program fees)

To Register... Go to the 4-H Center website:
texas4hcenter.tamu.edu Click on **Register Now** link-
Registration will open November 10th through January 7th. Remember, each county is responsible for providing adult chaperones.

**RETREAT INCLUDES A
DUDS TO DAZZLE
SESSION**

