



Lampasas County 4-H News

December 2016

You are invited to the County-wide 4-H Christmas party.

December 12th from 6:00 p.m. - 8:00 p.m.

Old Middle School Cafeteria

There will be games, a community service project, a gift exchange, fun, and PIZZA!

Please bring a pair of warm socks, toiletries, and fruit to put in the gift bags. Forty bags will be filled and delivered following the party to the residents at

Pecan Creek Apartments.

We would like families to bring side dishes to go with pizza and a \$5 or less wrapped present for the gift exchange.

Inside this issue:

*State Fair	2
*Stock Shows	
*Carol of Lights	3
*Consumer Decision Making	
*Food Projects	4
*Photography Projects	5
*Jr Leadership Retreat	6
Calendar	7
Rabbit Palooza	9
Co. Stock Show Schedule	10-11

4-H Clubs will not have regular meetings in the month of December.

Project Information

4-H Shooting Sports Projects

- **Air Rifle Project** - Will not meet in December. Next meeting will be in January. Contact: Rusty Calk at 915-478-7681 or rusty.calk@yahoo.com

Rabbit Project

- The next rabbit project meeting will be **December 5th at 6 p.m. at the Showbarn**. Contact Angie Andrews at 512-734-3860 for information.

Dog Project

- The Dog Project will not meet in the month of December. They will resume meetings in January. Contact: Sarah Rugo at 979-627-5511

State Fair Winners

Congratulations to our Livestock Judging contestants at the State Fair of Texas. Pictured below left is Preston Isom who received 10th place. Below right is the Junior livestock judging team: Avery Hopson, Gemma Carroll, Preston Isom, and Kasi Andrews. They were 4th High Team in the Junior division. Great job!



Quality Counts

Quality Counts Verification will be a part of the process for entry in all 2016-2017 major & county shows. We will be requiring the Quality Counts Verification Number to be included on the entry forms in order for the exhibitors to show at any of our Junior, Jackpot and Scramble Shows.

This means youth exhibitors will need to demonstrate their knowledge of the Six Pillars of Character and the Eight Core Concepts presented in the Quality Counts Curriculum. **To do this, they will need to pass an online test on the website:** <http://qualitycounts.tamu.edu/> and acquire a Quality Counts Verification

number. A Verification number is obtained by answering 80% of the questions correctly on an online test. You will need it when entering majors. If you lose it then you will have to take the test again and get a new number. You will not be allowed to enter without it.

District Swine Show

The San Saba District FFA Swine Show will be this Saturday, December 3rd, at the County Showbarn. Check-in/Weigh-in is from 7- 9:30 a.m. The show begins at 10:30 a.m. For more information, contact Steve Forsythe at 512-556-2333.

Scholarship Training

Anyone interested in scholarship training might consider attending a District 7 4-H Scholarship Training session. See page 14 for the flyer. Call the extension office if you need more information.

Lometa Stock Show

Lometa Stock Show will be held December 17th at the Lometa ISD ag barn. For more info call Lometa AST Brad Barnett at 512 -734-3587.





Carol of Lights

On Saturday, December 3rd, Karen Longoria is requesting help for this 4-H fundraiser. 4-H will sell hot cider, warm pretzels, and glow sticks during the Christmas parade, which is part of the Carol of Lights festival. Middle and high school age 4-Hers interested in helping may contact the office. Elementary aged kids are also invited to help as long as a parent is with them.

We will meet at 4pm on Saturday, December 3rd at the extension office. Call the office or FaceBook to let us know if you would like to participate.

Watch email & FaceBook for notice in case of inclement weather.

Team Project - Consumer Decision Making

Good consumer skills can help you get more for your money. Consumer Decision Making (CDM) gives youth the opportunity to make wise decisions when shopping. CDM is a judging contest designed to teach kids to observe, compare and make consumer based decisions based on facts. 4-Hers use their consumer knowledge to rank similarly based products to fit a given scenario. Kids learn to organize their thoughts and to defend their decisions in oral reasons. CDM is a great way to learn how to shop better! The Consumer project's first meeting will be held Thursday, December 19th, at 6pm, at the Extension Office! **Please RSVP** so Karen knows you are interested. Come and learn all about the project and what it has to offer. We will be discussing the new classes for this year and preparing for the project! There are 3-5 members per team. Weekly practices will be scheduled based on team members' availability. Individuals can compete.

Friday January 29 is County Deadline for CDM Teams. Friday February 17th is the District Consumer Contest – at the San Angelo Stock Show. There is a possible large cash award for the senior division. Guidelines can be found at: http://texas4-h.tamu.edu/project_consumer/cdm

District 7 Food Show

We had 5 contestants at the District 7 Food Show in Abilene. Pictured at right are: Zayda Gorecki, Katelyn Martin (received 3rd place in the Jr. Fruits & Vegetables category), Allison Martin, Christian Dean, and Zodee Gorecki (kneeling). Christian also received 3rd place at the practice Consumer Decision Making at the Food Show.



Food Quiz Bowl

2016 is the first year Lampasas 4-H competed in the District 7 Food Quiz Bowl and they did a great job! Pictured at left are the members of Team B (from l-r) Addison Berry, Kasi Andrews, Katelyn Martin, and Allison Martin.



Food Challenge/Sewing Fun Day

A Food Challenge practice and a Sewing Fun Day will take place Sunday, December 11th from 2-5 p.m. at the County Annex Conference Room. Please RSVP prior to day of event.

There will also be a Food Challenge practice on Thursday, December 1st at 4 p.m. at the county annex.

What is the Food Challenge? The food challenge helps participants learn to make healthy food choices, improve energy and alertness, reduce disease and illness risks, and gain knowledge of nutrients. Major learning experiences are centered on nutrition, menu planning, food buying, preparation and food safety, careers, and cultural influences.

The district Food Challenge contest is January 25th in San Angelo.

December 12th is the county deadline.



Photography Judging

Besides entering photos in the 4-H photography contest there is an option for youth (Intermediate or Senior) to take part in a judging contest. It is an invitational contest so there is no elimination. It will take part as part of Texas 4-H Roundup at College Station in June. Judging teams will consist of 4 members or individuals can participate.

See the following link for complete contest rules. http://texas4-h.tamu.edu/wp-content/uploads/17_TX4H_PhotoJudgingRules.pdf



2017 Photography Rules & Guidelines

Watch for emails and Facebook postings for workshop information. Let Karen know if you have suggestions. The 2017 Texas 4-H Photography Rules and Guidelines are now available online. The categories have remained the same for the 2017 contest. Check the website to address questions pertaining to what is allowable in each category. The theme for 2017 is: "Reflections." A photo shot off any natural or artificial reflective surface. A well-executed

shot can show perfect symmetry or a slightly distorted shot. The 2017 Rules and Guidelines are posted on the Texas 4-H Photography website at: http://texas4-h.tamu.edu/wp-content/uploads/Texas4H_Photo_Rules.pdf

The County contest for Jr. & Intermediate requires the 8 by 10 photos to be mounted on foam board backing which the office can supply.

2016-2017 4-H Enrollment

The 4-H enrollment fee is now \$25 per child since the Oct. 31 deadline has passed. There are 3 clubs in which to enroll this year: Sulphur Creek Club, Oakalla/Kempner Club, and Lometa Club. Current members will need to log into their family profile on 4-H Connect:

<https://texas.4honline.com/Login.aspx?>

403D4079444C6D387A6E595A2

F6F3D New members will need to create a family profile.

Camps

There are 3 camps/retreats coming up for 4-Hers at the State Conference Center in Brownwood.

1. **Teen Retreat** (See bottom of page 6)
2. **ReFashion Retreat** (See page 12)
3. **Archery Family Camp** (See page 13)



Eight 4-Hers from Lampasas County along with adult volunteer Shelly Long attended the Junior Leadership Retreat at the 4-H Conference Center in Brownwood. They had a great time!

Attendees were Kasi Andrews, Mikaila Fortner, Catherine Hicks, Dianne Ledford, Nyla Long, Emily Lusty, Sara Lusty, & Ruger Miserlian.



2016 Junior Leadership Retreat

"Finding 4-H"

November 11-13, 2016

Hosted by 2016-2017 Texas 4-H Council



The Texas 4-H Center is hosting Teen Retreat January 6th-8th. This weekend long program is for youth in grades 8-12 to learn about specific activities inside 4-H. County Agents, 4-H Specialists and the 4-H Center summer staff will be leading the programs.

This year's educational sessions include

- Vet Science
- Gardening
- Leadership
- Healthy Lifestyles.

As always, we will have a 4-H dance on Saturday night. Cost is \$120 for youth or \$90 for adults.

Any adults attending must enroll as a volunteer in 4-H Connect, complete the online child protection training in 4-H Connect, and submit a background check, also via 4-H Connect. Please share this information with you 4-H families. We are looking forward to a great program.

If you have questions, contact Jenny Wilder at 325-784-5482 or Jenny.Wilder@ag.tamu.edu

Texas A&M AgriLife Extension provides equal opportunities in its programs and employment to all persons, regardless of race, color, sex, religion, national origin, disability, age, genetic information, veteran status, sexual orientation, or gender identity.

December 2016



Sun	Mon	Tue	Wed	Thu	Fri	Sat
				1 Food project meeting @ 4:00 in con- ference room	2	3 *Carol of Lights *District Swine Show
4	5 Rabbit Project @ 6 p.m. @ Showbarn	6	7	8	9	10
11 Food Challenge/ Sewing Fun Day from 2-5 in Conf. Rm	12 Christmas Party 6-8 @ Old Middle School Cafe- teria	13	14	15	16	17 Lometa Stock Show
18	19 Consumer Decision Making @ 6 p.m. @ annex	20	21	22	23	24
25	26 Office Closed	27	28	29	30 Office Closed	31

TEXAS A&M AGRI LIFE EXTENSION

Lampasas County Extension Office,
409 S Pecan, Ste 102
Lampasas, TX 76550
(512) 556-8271, x140
E-mail: lampasas-tx@tam.u.edu
Home Page: <http://lampasas-tx.tamu.edu>



FACEBOOK Check out
Lampasas 4-H on Facebook.
Become a friend!
<http://www.facebook.com/groups/199928750048104>



4-H motto: To Make The Best Better

Lampasas County 4-H is readily available on the internet
Below are links to many sites you may find useful.

*Lampasas County Extension website—<http://lampasas.agrilife.org/>

*Texas 4-H website—<http://texas4-h.tamu.edu/>

*Use this link to learn all about state 4-H programs & find publications
(project guides, record keeping information, etc.)*

*State 4-H registration page, 4-H Connect—<https://texas.4honline.com/>

*National 4-H site including the 4-H mall—<http://4-h.org/>

*Clothing & Textiles Packet—

<http://fcs.tamu.edu/clothing/4h/packet/index.php>

*Share the Fun Information—<http://texas4-h.tamu.edu/events/roundup/>

*District 7 4-H Events— <http://d74-h.tamu.edu/>

*4-H Shooting Sports— http://texas4-h.tamu.edu/project_shooting/

*4-H Round-Up— <http://texas4-h.tamu.edu/youth/roundup/index.php>

*Leaders 4 Life— http://texas4-h.tamu.edu/project_leadership/leaders

*Better Living for Texans—

<https://www.facebook.com/BetterLivingForTexansLampasasCounty>

*Texas 4-H Conference Center—<http://texas4hcenter.tamu.edu/>

Will You Be a 4-H Member in Good Standing?

* Select one or more projects for in-depth study

* Record what you learn (record book)

Attends meetings regularly and is an active participant

* Completes a community service project (or becomes involved in a group community service project)

* Participates in some form of public presentation

* If you are elected as a club officer completes duties expected of that office

Parents please support your children to complete these expectations and volunteer to help at club and/or project meetings with such things as supplying drinks, snacks and/or activities. Volunteers are needed for project management and new club management. Contact Heath or Karen if interested.

Rabbit Palooza

Our 4-H fundraiser, Rabbit Palooza was a great success! We raised over \$1500. Thank you to our County Council kids for getting sponsors, and all others who helped make it run smoothly.

Winners were:

Riley McBride – Best of Show, Best of Best

Opposite, & Jr. Showmanship

Julia Gibson – Reserve Best of Show

Kasi Andrews – Best Opposite

Josiah Dorn – Intermediate Showmanship

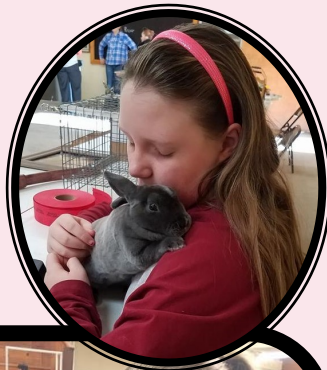
Erin Wester – Sr. Showmanship



Riley McBride



Julia Gibson



Kasi Andrews



Texas A&M AgriLife Extension provides equal opportunities in its programs and employment to all persons, regardless of race, color, sex, religion, national origin, disability, age, genetic information, veteran status, sexual orientation, or gender identity.

2017 Lampasas County Show Schedule

Saturday, January 7

> **9:00 am:** Showbarn preparation/Clean Up (all exhibitors required to participate)

Wednesday, January 11

> Ag Mechanics move in (projects must in place by **7:00 p.m.**)

Thursday, January 12

> Animals may begin arriving to the barn at 8:00 am.

7:00 am – Rabbit check-in. Show to immediately follow check-in. (Show Ring)

- 4 Class Division
- 6 Class Division
- Rabbit Showmanship to follow the rabbit show (junior, intermediate, senior, pee wee).

12:00 pm – 1:00 pm – Food Fair check-in (to follow the conclusion of the rabbit show, but not before 12 pm)

1:00 pm – Food Fair judging begins

4:00-6:00 pm – Swine weigh-in/check-in

5:00 pm - Food Fair Awards (Show Ring)

5:30 pm – Exhibitor Meeting (Show Ring)

5:00 – 6:30 pm – Market lambs begin to weigh and classify followed by meat goats.

6:00 pm – Broiler check-in starts with show to follow (Show Ring)

- Pullet show followed by cockerel show

6:00 pm - Swine check-in closed

7:00 pm – Steers begin to weigh and classify.

- Heifer registration papers will be checked following the steers.

7:00 pm – All animals must be in place

Friday, January 13 (Judging will be continuous as announced!)

8:00 am-- Ag Mechanics show begins

9:00 am --Swine show begins: in breed order (Hampshire, Yorkshire, Duroc, OPB, & Crossbreed)

- Breeding Show (registered followed by crossbred)
- Market Show
- Swine Showmanship – Junior, Intermediate, then Senior
- Lee Vann Sportsmanship Award
- Britt Hopson Memorial Award
- Pee Wee Showmanship

Ag Mechanics Awards – announced at **12:00 pm** (Show Ring)

Market Lamb show: will begin after the completion of the swine show BUT not before 1:00 pm.

- Market lambs in breed order - Southdown, Fine Wool, Fine Wool Cross, Medium Wool, Hair Sheep
- Lightweight show first.
- Market lamb showmanship – Junior, Intermediate, then Senior
- T.R. Carson Award

Cont. on next page

Goat show: will start after the completion of the lamb show.

- Breeding goat show, followed by breeding goat showmanship (junior, intermediate, senior).
- Market goat show, followed by market goat showmanship (junior, intermediate, senior).
- Klose Sportsmanship Award
- Pee Wee Showmanship – Lamb & Goat together

******At the conclusion of the goat show: ALL tables, equipment, and tack must be cleared out of the sheep and goat aisles in order to prepare for the cattle show.**

Saturday, January 14

8:00 am

- Heifers – show begins in breed order:
American, British, Exotic (calves then yearlings)
- Steers to follow the heifers – shown in the above breed order - lightweight shows first
- Beef Cattle Showmanship – Junior, Intermediate, then Senior
- Cattlewomen's First-Year Showman Award
- Marvin Vann Sportsmanship Award
- Buddy Perry Award

3:30 pm-- Exhibitors report to showbarn kitchen area for Buyers Dinner - to eat then serve.

> ALL exhibitors are asked to report at 3:30 pm in a white shirt to help serve at the Buyers Dinner.

5:00 pm – Buyers Appreciation Dinner

6:30 pm-- Premium Sale

REFASHION RETREAT

JANUARY 13-15

TEXAS 4-H CENTER-BROWNWOOD, TX

This weekend-long retreat open to junior, intermediate, and senior 4-H members features educational sessions conducted by the Texas 4-H Clothing & Textiles Advisory Board and 4-H agents and specialists. They will be conducting hands-on educational workshops related to the 4-H Clothing and Textiles Project. The highlight of the retreat is for 4-H members to use their consumer buying skills to purchase items from a local thrift store and then refurbish them into a new garment, which they will model in a style show the last morning of the retreat.

Each youth member must be accompanied by an adult. One adult may chaperone multiple kids. All adults must enroll as a 4-H volunteer have a verified background check and complete child protection training in 4-H Connect prior to camp.

Cost: \$120 for youth
\$90 for adults

Early bird registration closes on December 26th. Registration then goes up 5% and closes on January 6th.

To register, go to texas4hcenter.tamu.edu.



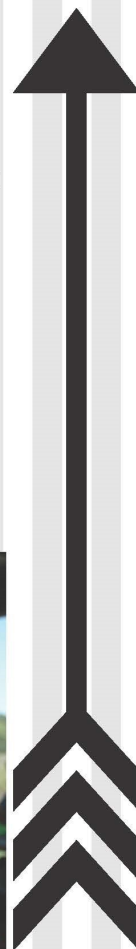
TEXAS A&M
AGRI LIFE
EXTENSION

The members of Texas A&M AgriLife will provide equal opportunities in programs and activities, education, and employment to all persons regardless of race, color, sex, religion, national origin, age, disability, genetic information, veteran status, sexual orientation or gender identity and will strive to achieve full and equal employment opportunity throughout Texas A&M AgriLife

Texas A&M AgriLife Extension provides equal opportunities in its programs and employment to all persons, regardless of race, color, sex, religion, national origin, disability, age, genetic information, veteran status, sexual orientation, or gender identity.



4-H FAMILY ARCHERY CAMP JANUARY 20-22



This weekend long camp is open to current 4-H members interested in the archery project. It is designed to improve shooting skills and knowledge. Youth participants should have some knowledge but this is a beginner level program.

This is a family style program, meaning Mom and Dad (or other family adults) will attend along with their kids and learn the same knowledge and skills. Lodging is also family style, with all family members in the same room. One adult may accompany multiple youth. All adults must enroll as a 4-H volunteer, have a verified background check, and complete child protection training in 4-H Connect prior to camp.

\$170 (hotel-style lodging)

\$145 (dorm-style lodging)



The members of Texas A&M AgriLife will provide equal opportunities in programs and activities, education, and employment to all persons regardless of race, color, sex, religion, national origin, age, disability, genetic information, veteran status, sexual orientation or gender identity and will strive to achieve full and equal employment opportunity.



District 7 4-H Scholarship Training



6:30-8:30 pm

December 5 – Brown County Extension Office

December 13 – Tom Green County 4-H Building

December 15 – Llano County Extension Office

For guidelines and application:

<http://texas4-h.tamu.edu/scholarships/>

Due dates and deadlines for 2017 Scholarship process are as follows:

October 2016	Release of 2016 Application
October 2016	Applicant complete FAFSA and receive report
Set by County Office	Application due to County Office
February 3, 2017	Applications due to District Office
February 17, 2017	Applications due to State 4-H Office
April 14, 2017	Interview selection notification
May 5-7, 2017	Interviews (College Station)
June 6,7, &/Or 8, 2017	Awards Assemblies/Banquets(College Station)